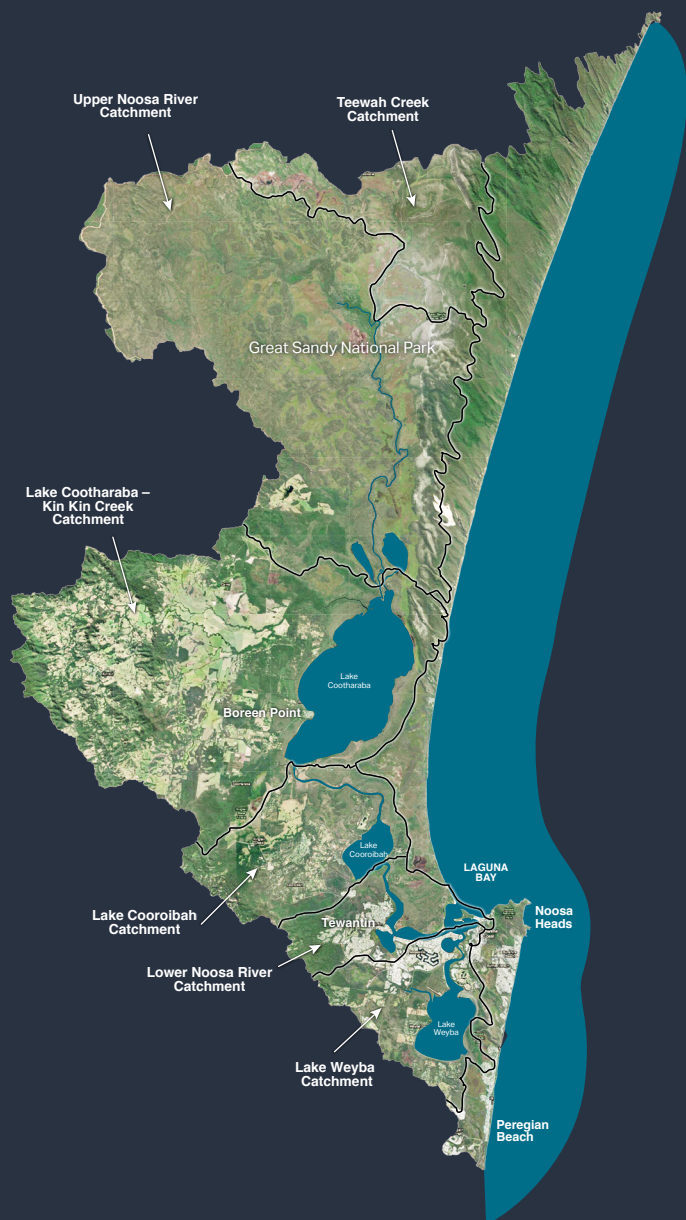


NOOSA INTEGRATED CATCHMENT ASSOCIATION **MEMBERSHIP PROSPECTUS** 2023-2024



NICA'S PURPOSE AND OBJECTIVES



“The conservation and ecologically sustainable use of the Noosa River catchment”

854km²

at the intersection of the Macleay-McPherson overlap

1,505km

of coastal lagoons, rivers and creeks

61

regional ecosystems

1,340

plant species

350

terrestrial vertebrate animals

217

bird species

2

nationally significant wetlands

A community of over

54,000

residents

For

26 years

one community organisation dedicated to its conservation and sustainable use

NICA'S STRATEGIC OBJECTIVES:

- Strengthen conservation of the Noosa River catchment
- Enhance community knowledge
- Improve awareness and understanding across the community
- Contribute to improved water quality
- Collaborate with, and support, partners within the catchment
- Support science-based intervention to improve long-term sustainability
- Explore and broaden funding sources

Acknowledgement of country

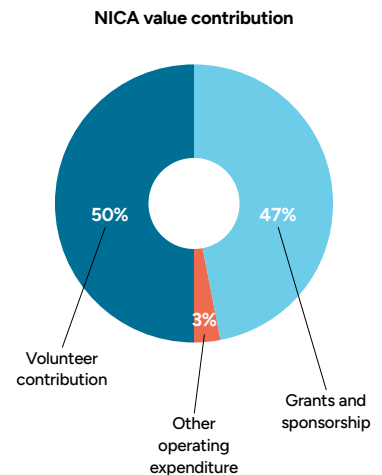
NICA acknowledges the Kabi Kabi people as the traditional owners of the land and sea of the Noosa River catchment. We pay our respect to their Elders past, present and emerging and recognise the enduring role of Aboriginal and Torres Strait Islander people in caring for country across Australia.

NICA'S VALUE CONTRIBUTION

NICA's management committee, program coordinators and the members who participate in our programs are all volunteers from the Noosa community. Our programs, including expenditure on equipment and contractors, are funded through a combination of grants from third parties, donations from the community or the sale of merchandise and other income streams from NICA.

The contributions of volunteers towards NICA's programs ("in-kind" contributions), multiply the value of the grant and other funds received or deployed by NICA toward the Noosa catchment. In line with guidance from the Australian Bureau of Statistics, NICA applies an "in-kind" value of \$46 per volunteer hour contributed.

In FY2022, NICA estimates that our volunteers contributed over 5,000 hours toward our programs and the catchment – significantly multiplying every \$1 invested in our programs through grants and other funds.



5,000+
volunteer hours contributed

NICA'S INTEGRATED CATCHMENT MANAGEMENT PROGRAM

Since 1996, NICA's aim has been the conservation and ecologically sustainable use of the Noosa River catchment. NICA's integrated catchment management program is aligned to that purpose and organised across four linked thematics:



Catchment Management

including our Bushcare, Urban Wildlife Gardens and Get Your Wetlands programs;



Waterways

including our Riverwatch, Waterwatch programs and aligned programs;



Threatened Species

including our high priority biodiversity conservation programs (e.g. migratory shorebirds, aquatic ecosystems, flora species);



Community and Awareness

spanning our botanical publications, Monday with NICA forum and community participation events (Clean Up Australia Day, Wildflower Festival, Tread Lightly).

NICA's activities and programs utilise the support of hundreds of volunteers of all ages from across our community, supported by a panel of expert contractors and external consultants.

NICA targets best-in-class citizen science outcomes and attracts funding to support our programs from grants, donations, merchandise and other income streams.

NICA MEMBER BENEFITS

- Get involved in Noosa Integrated Catchment Association's (NICA) range of volunteer-led conservation and sustainable use programs focussed on the Noosa River catchment:
 - On-river programs including Riverwatch and Waterwatch
 - Threatened species recovery programs
 - Bushcare land restoration
 - Urban Wildlife Gardens
 - Educational workshops, events and excursions
- Learn about our fragile local environment from NICA's experts and gain new skills
- Come along to regular networking and social opportunities at NICA events and workshops
- Access NICA's member discount program including 10% off all merchandise and publications



BECOME A NICA MEMBER

Thank you for your interest in becoming a NICA member. NICA is the largest volunteer-led active participation community organisation in Noosa. NICA is focussed on the conservation and sustainable use of the Noosa River catchment.

NICA membership offers the opportunity to directly participate in the conservation and sustainable use of our fragile local environment, learn from NICA's experts and join a like-minded group at a range of social and awareness events. By becoming a NICA member you will also enjoy a 10% discount on all NICA merchandise including our range of botanical publications.

Membership for the year 1 July 2023 to 30 June 2024 is \$20 per person or \$35 per couple and you can renew your membership or join NICA by returning the form below to NICA at admin@noosariver.com.au or online at www.noosariver.com.au/nica-member. Payment is accepted by EFT, credit card or direct debit.

NICA's constitution can be read at www.noosariver.com.au/constitution and NICA has a current public liability insurance policy limited to \$30,000,000 for any one event.

* indicates required

Yes, by submitting this form, I/we agree to abide by the NICA Constitution. *

Yes, please subscribe me to the NICA e-newsletter.

Member name *

Membership *

Single (\$20)

Couple (\$35)

Second member's name (if applicable)

Address *

Suburb *

Postcode *

Phone *

Email *

Which NICA programs are you interested in? *

- On-river programs including Riverwatch and Waterwatch
- Bushcare land restoration
- Urban Wildlife Gardens
- Educational or social events

'Do you agree to being contacted by a NICA Management Committee member?' *

Yes

No

Please scan for payment:

INDIVIDUAL



Or click here

COUPLE



Or click here

Or direct deposit

Please include your surname:

Noosa Integrated Catchment Association

BSB: 633 000 Account: 148064363



Noosa Integrated Catchment Association

Email: admin@noosariver.com.au

Telephone: (07) 5449 9650

Street address: 52 Doonella Street, Tewantin, Qld, 4565

Postal address: PO Box 172, Tewantin, Qld, 4565

Open hours: Monday to Wednesday between 9.30 am and 3.30 pm