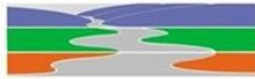


\* learn about where you live \* learn about where you live \* learn about where you live \*

\* drive \* talk \* walk \* drive\*

Noosa Integrated



Catchment Assn. Inc.

[www.noosariver.com.au](http://www.noosariver.com.au)

**NICA**

20th ANNIVERSARY

## **CATCHMENT EXCURSION No. 3**

### **FORESTS in the Catchment**

- \*Up close at Ringtail Pine Plantation  
With staff from H Q Plantations
- \*Overview from Mt. Tinbeerwah  
With Landcare staff and champagne at sunset

#### **MEET AT**

3 pm Saturday 7th May 2016  
McKinnon Drive 1.5 k past Ringtail Ck. Rd.  
(See map overleaf and look for NICA sign)

**BYO AFTERNOON TEA  
AND CHAIR**

For more information phone Stephanie 5449.8118

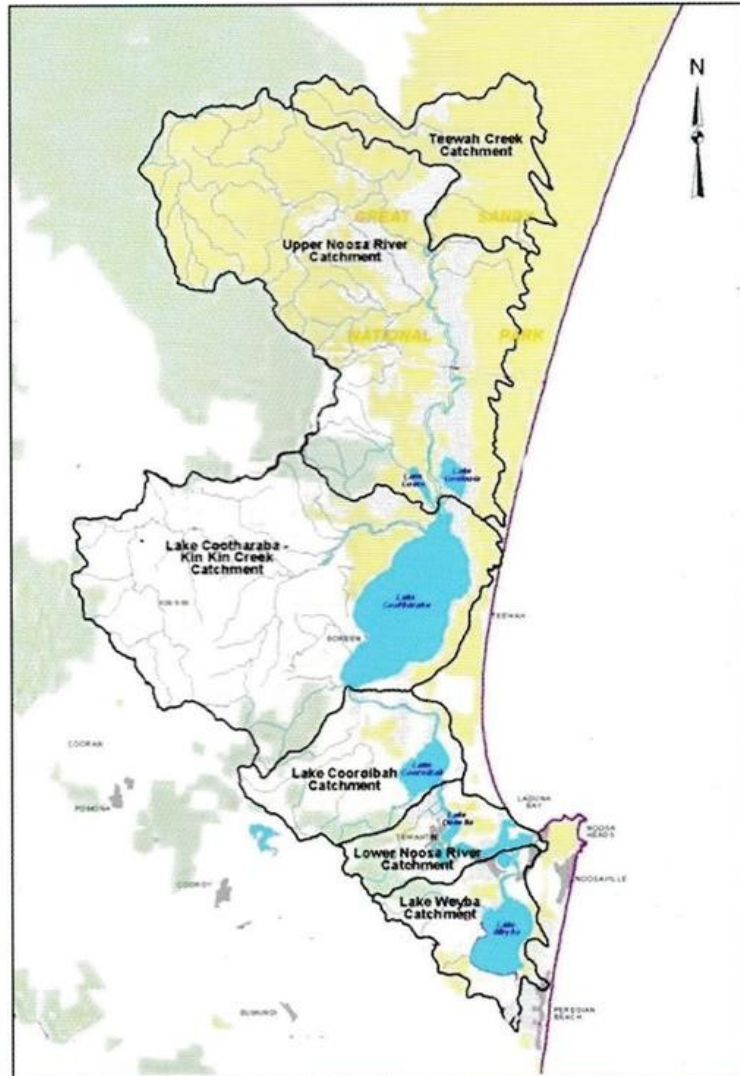
\* drive \* talk \* walk \* drive \* talk \* walk \* drive \* talk \* walk \* drive \* talk \* walk \* drive \*

\* drive \* talk \* walk \* drive \* talk \* walk \* drive \* talk \* walk \* drive \* talk \* walk \* drive \*

\* drive \* talk \* walk \* drive\*

\* learn about where you live \* learn about where you live \* learn about where you live \*

# Noosa River Catchment



## What is a catchment?

A catchment is the land area from which rainwater drains to a river. Some water remains underground, slowly feeding the river between rainfall events.

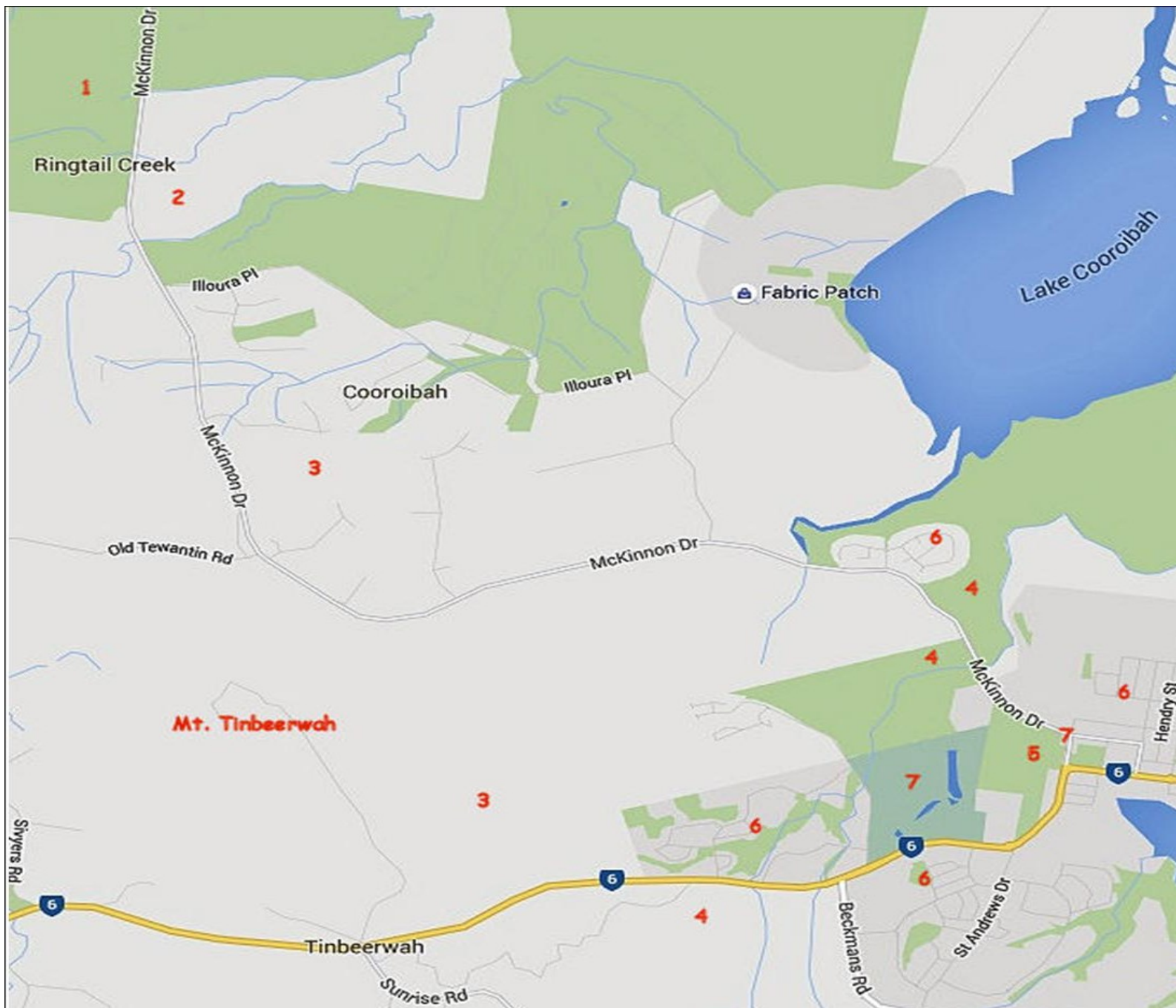
**Land uses to note on the drive from Ringtail Creek to Mt. Tinbeerwah**

**(Ringtail and Noosa Estuary sub-catchments )**

1. Pine Plantation
2. Agriculture (cattle grazing beside creek)
3. Rural residential
4. National Park
5. Conservation Park (Gladys and Harry Spring)
6. Residential
7. Golf Course & sports complex

**THANKS**

To the friendly and helpful staff at HQ Plantations and  
To the friendly and helpful Steve Husband from  
Noosa and District Landcare







Mike Robinson, Regional Forest Manager for Coastal Plantations and Shona Heading, Planning Technician. Shona conducted the Social Impact Analysis for Ringtail and oversaw the project.

Web Link

[www.HQPlantations.com.au](http://www.HQPlantations.com.au)

Forest Stewardship Plan  
HQPlantations Pty Ltd





Photo Tony Haslam-



Photo Tony Haslam-



Photo Annie Guthrie  
Photo Tony Haslam-





Photo Tony Haslam-





Photo Annie Guthrie



Photo Annie Guthrie





Photo Annie Guthrie



Photo Annie Guthrie



# Precis of talk at Mt. Tinbeerwah Lookout

## By Steve Husband, Project Officer

### Noosa and District Landcare

---

- Acknowledgment of traditional owners in the Noosa River catchment – Gubbi Gubbi and Butchulla peoples. Important indigenous cultural heritage values of the landscape including cultural heritage sites and important landscape features.
- Personal introduction – qualifications as forester, member of Institute of Foresters of Australia, formerly employed as HQ Plantations planning forester, responsible for planning harvest & re-establishment of Ringtail pine plantation.
- History of forestry in the Noosa River catchment – escaped convict John Graham's ('rescuer' of Eliza Fraser) hand-drawn map of lower Noosa catchment; early cedar getters in area from 1860's; early forest harvesting and transport – axe/saw hand-felling & generally single tree selection & rafting of timber down rivers and creeks; William Pettigrew's explorations and timber getting activities from 1863; Elanda Point Mill 1869 to 1892 – 6500 m<sup>3</sup> of sawn timber per year in 1873, tramways built of ironbark & southern penda, catastrophic impact on local tree stocks including kauri pine and other rainforest timber trees; large number of early sawmills throughout the area – leaving very little trace; records of large trees in area – Bell's Pine at Wahpunga for example; Queensland Forestry Department formed in 1900; cypress & rainforest timber harvesting – Harry's Hut area; Cooloola National Park declared in 1975.
- The role of forestry in shaping the forest landscape that we see – early days of single tree selection; cutting & closing up of extraction tracks & roads; wildfire suppression and planned burning; re-planting of harvested eucalypt forests.
- Noosa & District Landcare Group's revegetation work in the catchment – past projects; 20 Million Trees projects; brief outline of revegetation practice – site survey & species selection, planting techniques, post-plant weed control and monitoring; the long-term time horizons for restoring complex regional ecosystems such as lowland subtropical rainforest.



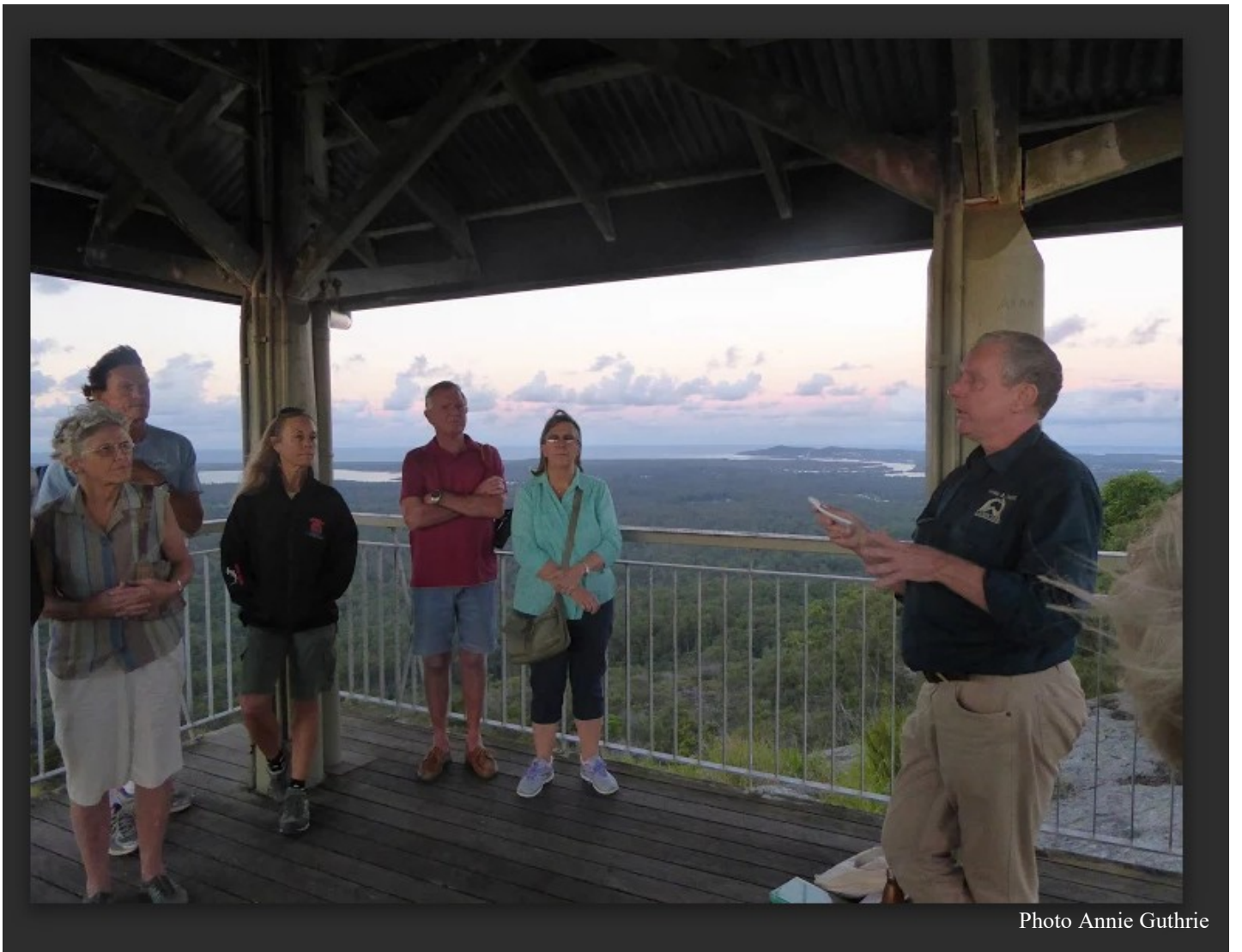


Photo Annie Guthrie

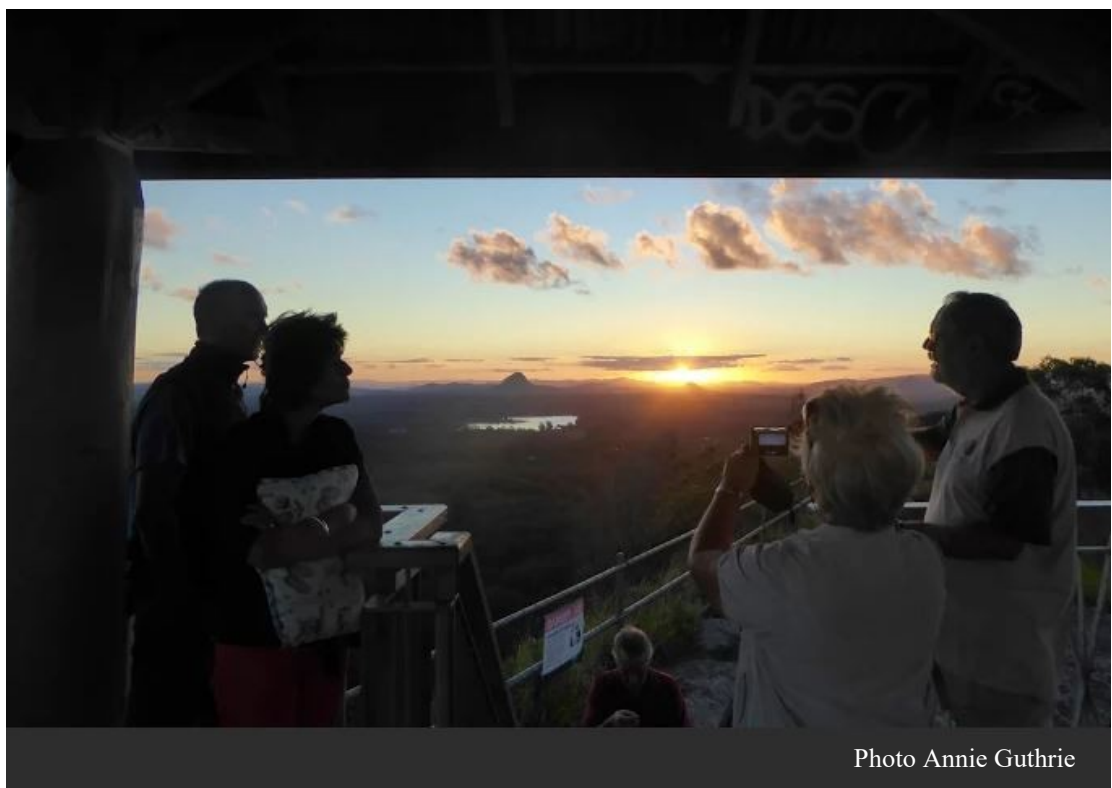


Photo Annie Guthrie





Photo Annie Guthrie

